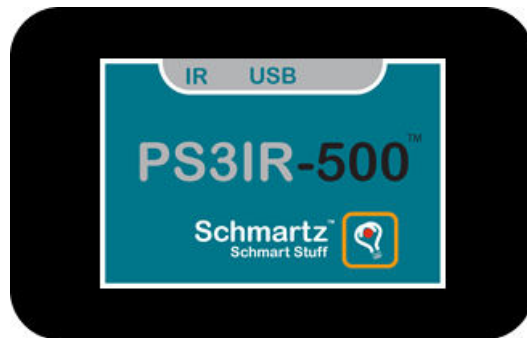


PS3IR-500

User Manual



Version 1.2

© 2010 Schmartz, Inc.

Specifications:

- Dimensions 3.2" x 2.0" x 0.6" (82.5 x 51.3 x 15.1 mm)
- Weight 1.2 oz (34 g)
- Power Requirements 5 Volts, 100mA
- Temperature Range 32-104 °F (0-40 °C)
- Relative Humidity 15% - 95% Non condensing
- Placement In view of remote – not in direct sunlight
- PC System Requirements PC: Windows 2000 or later

Warnings:

- Do not expose PS3IR-500 to excessive heat.
- Install only indoors in dry locations.
- Clean with dry or slightly damp soft cloth.

Liability Statement

Every effort has been made to insure that this product is free of defects. Schmartz, Inc. cannot be held liable for the use of this hardware or any direct or indirect consequential damages arising from its use. All rights are reserved. No parts of this manual may be transmitted or reproduced by any means mechanical or electronic, including photocopying, or recording by any information storage/retrieval system without the written consent of Schmartz, Inc.

Schmartz, Inc. reserves the right to revise any of its hardware / firmware to improve its products where necessary or desirable.

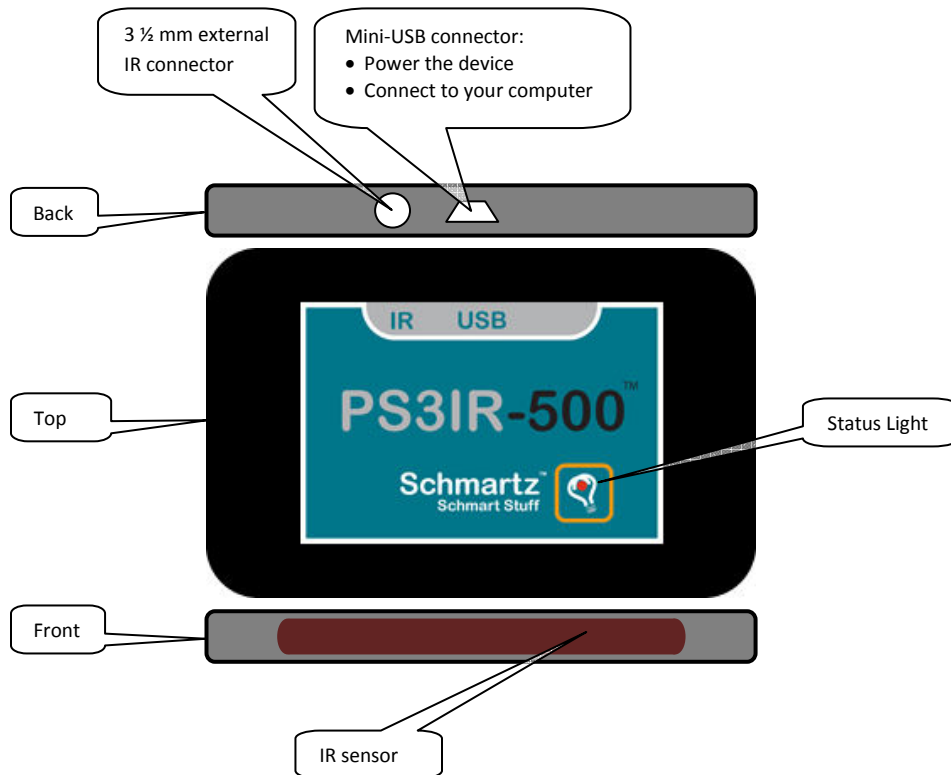
Table of Contents

INTRODUCTION	4
GETTING ACQUAINTED	4
UTILITY TOOL	5
CHECK FIRMWARE STATUS	6
UTILITY ORGANIZATION	6
SETTINGS	7
<i>Configure IR Inputs</i>	7
<i>Configure Code Set</i>	9
PS3IR-500 IS NOT WORKING AT ALL.	10
PS3 WILL NOT POWER DOWN	11
REMOTE OPERATES INCONSISTENTLY, RANGE NOT SATISFACTORY.....	11
PS3 POWERS UP UNEXPECTEDLY	11
NOT RESPONDING TO REMOTE CONTROL	11
REGULATORY COMPLIANCE	12

Introduction

Getting Acquainted

Let's look at the PS3IR-500 device layout and terminology. The picture below is what your device looks like from the back, top, and front views.



From the back, there are two connectors, from left to right these are:

- IR, a 3 1/2 mm female connector used to connect to an external IR source (IR Repeater).
- USB, a mini USB connector used to power your device or connect to your PC for various configuration and support reasons.

From the top, there is a status light that is visible in the Schmartz logo. The status light will be on when power is applied and will flash as commands are being processed. The status light will help you verify that the device is operating properly.

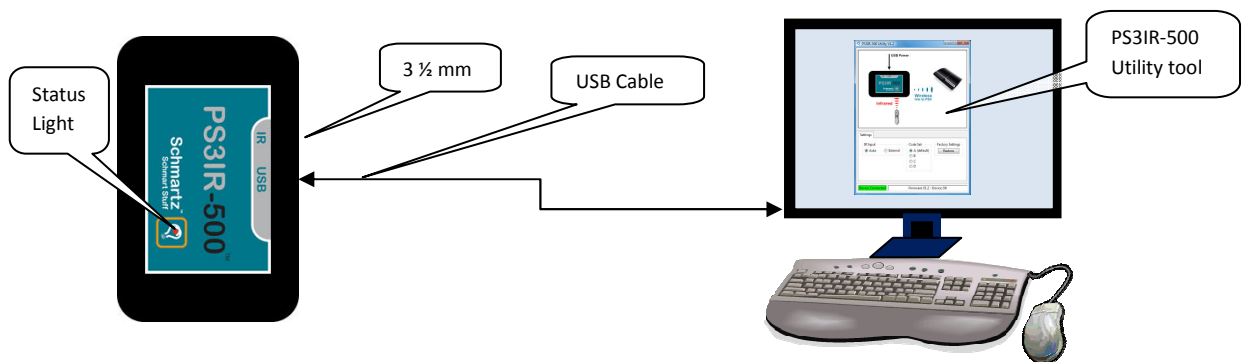
From the front, the IR sensor is behind a plastic window at the location indicated. This sensor must have line of sight with your remote control in order for the sensor to “see” the IR commands.

Utility tool

The PS3IR-500 comes from the factory with its features configured properly for the most frequent use. If you wish to reconfigure or take advantage of more advanced features, you need to attach your PS3IR-500 to your computer and utilize the PS3IR-500 Utility tool. With this Utility you may:

- Check Firmware Status
- Configure IR inputs (to use an IR repeater)
- Configure IR Code Set

To use the PS3IR-500 Utility, connect the PS3IR-500 to your computer using the supplied USB cable. The Utility is available for any PC running Windows 2000 or later. The program can be downloaded from the Schmartz.com website.

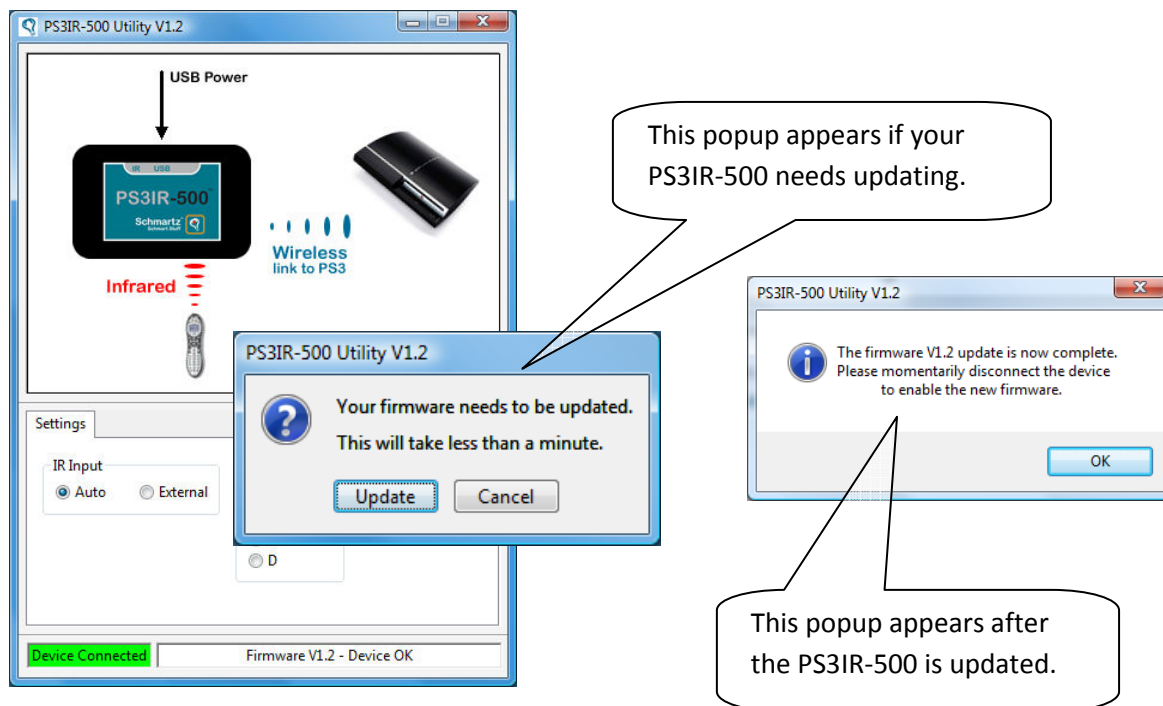


You may start the Utility before or after connecting your PS3IR-500 to your computer. When the Utility starts, a primary window appears on your computer monitor. The bottom section of the window is a status/message bar that is used to document the connection of the PS3IR-500 to the Utility tool. If the status portion is green, the device is properly attached and operating; if the status portion is red, the device is not attached or is not operating properly. The status light on the top of the device will light up signifying power is on. Appropriate messages appear in the message portion.

Check Firmware Status

From time to time Schmartz may determine that firmware updates are required to keep the PS3IR-500 operating properly or to add new features. If the device detects internal firmware corruption, the status light will continuously flash rapidly. It will be necessary to attach the PS3IR-500 to your computer and run the PS3IR-500 Utility tool to check firmware status and download new firmware.

The very first thing the Utility does when a PS3IR-500 is detected is to check firmware status. If the firmware is out of date (or if the firmware has become corrupted), the utility will ask you to either update the firmware or cancel the utility. In no case will the utility continue until the firmware has been updated. The update process is under one minute and the status light will flash while new firmware is being loaded. At the end of firmware update, you will have to briefly unplug and re-plug the device to complete the process (think of it as restarting your computer after an update...).

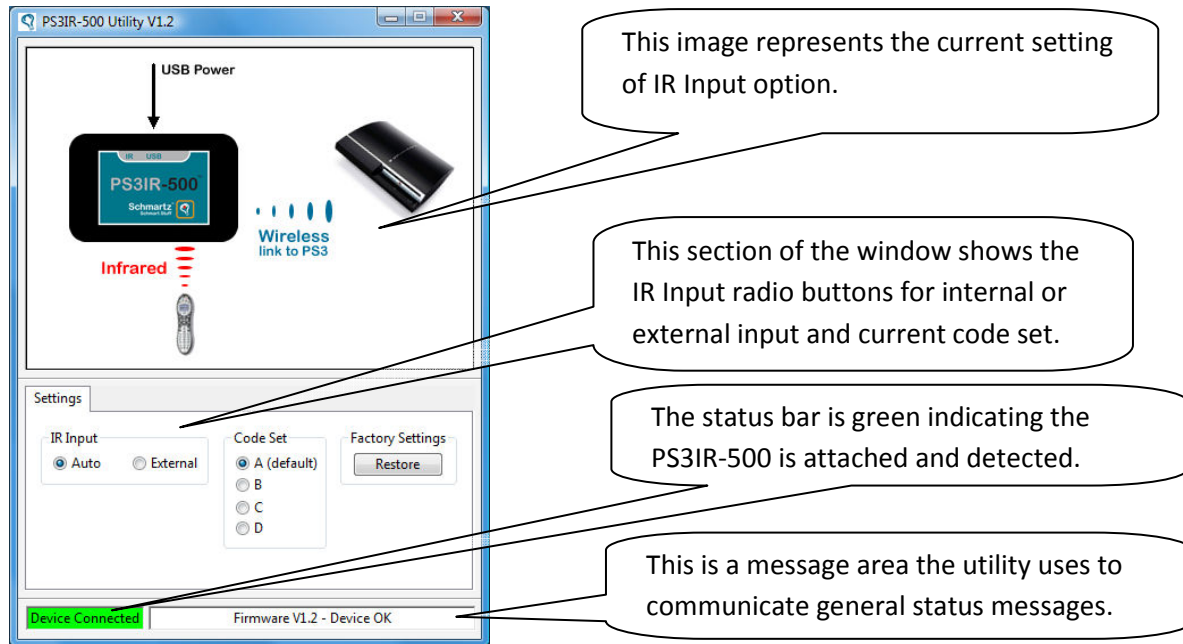


Utility Organization

The Utility window has two major sections. The top section is reserved for a diagram that depicts the connections needed for proper operation with the current configuration selections. The center section is tabbed to select the functions of the Utility:

- Settings

The following image represents starting the Utility tool with a PS3IR-500 attached to your PC.



Settings

The Utility tool allows you to configure IR inputs, configure code sets or restore Factory Settings.

Configure IR Inputs

The PS3IR-500 supports all brands of IR repeater devices. To connect an IR repeater to a PS3IR-500 use any industry standard 3 ½ mm mono cable between the IR repeater and the device. There are no polarity considerations for this cable connection.

There are two “radio buttons” for IR inputs. You can select either “Auto” (factory setting) or “External” (if you plan on using only the IR repeater).

With the IR input set on “Auto”, the PS3IR-500 will use the internal IR sensor until a signal is sent through a connected IR repeater cable. Once the IR repeater is used, the internal IR sensor will be ignored from that point forward. If the PS3IR-500 is powered off and on, this process of automatic

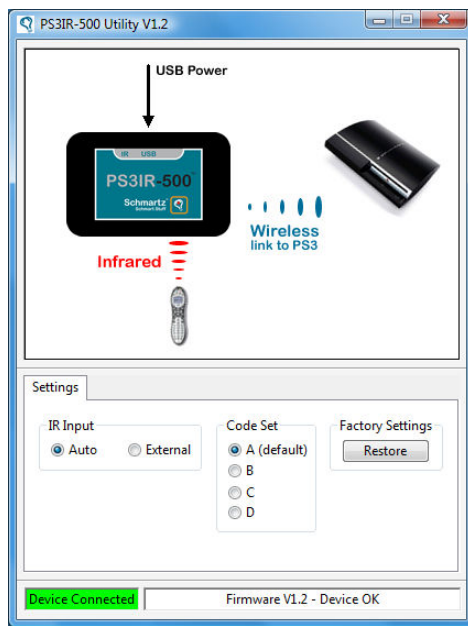
configuration is repeated (i.e. the internal sensor will be active until a signal is detected from the IR repeater cable).

With the IR input set on “External”, the PS3IR-500 will only process commands using the IR repeater. The internal sensor is always ignored. If you decide you DO NOT want to use the IR repeater, and you have configured the PS3IR-500 to “External”, you must reconfigure the PS3IR-500 back to “Auto” for the device to use the internal sensor.

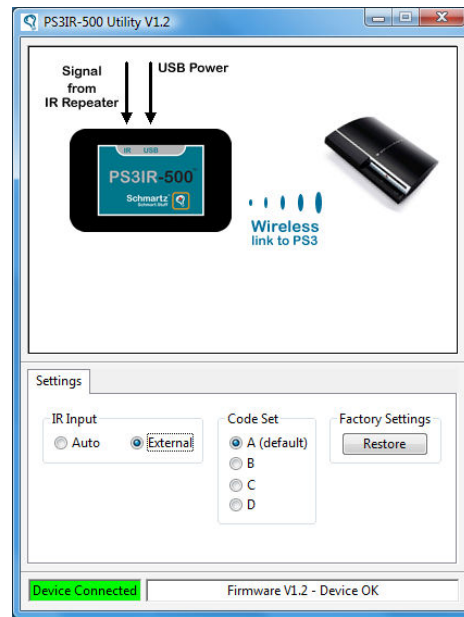
The diagram at the top of the Utility window will depict the connections necessary for the current IR Input setting.

The screen images below represent the two possible settings of IR Input.

NOTE: Each of the images below illustrates the proper connections of the PS3IR-500 and IR repeater devices depending on the setting of the configuration buttons. All configuration settings are immediately stored in the PS3IR-500.



IR Auto



IR External

Configure Code Set

Your entertainment system may contain devices that have conflicting IR codes. If when controlling your PS3, another device (such as a SONY DVD player or PS2) responds to commands intended for your PS3, you have such a conflict. The PS3IR-500 can correct this conflict by configuring the IR Code Set used to control the PS3. There are four Codes Sets configurable in the PS3IR-500: Code Set A (default), Code Set B, Code Set C and (you'll NEVER guess!) Code Set D. The definition of these codes is documented on the Schmartz website in the PRONTO CODE spreadsheets. You will need this IR code information to set up your universal remote control with the matching IR codes.

The Code Set configuration selection is made with four radio buttons in the utility program. The factory default setting is Code Set A.

After you have made the PS3IR-500 Code Set selection, you will have to refer to the PRONTO CODE spreadsheets for the necessary information to modify your universal remote to use the alternate Code Set.

Restore Factory Settings

If you want to restore your PS3IR-500 to its factory settings, click on the "Restore" button under Factory Settings. This operation takes less than 2 seconds and all settings are restored to "out of the box" factory settings.

Troubleshooting Guide

PS3IR-500 is not working at all.

Diagnose general problems systematically:

- 1) **Is the PS3IR-500 powered up properly?** Look at the status light (inside the Schmartz logo on the top label).

If the status light is lit (not flashing), go to step 2.

If status light is flashing rapidly, the firmware has detected an internal error and the firmware must be updated. Refer to the “Firmware Updates” section for directions to attach your PS3IR-500 to your computer and execute the Utility tool.

If the status light is not on, plug the USB cable into any powered USB port. Consider using:

- Satellite receiver
- DVR/TIVO
- Nearby computer
- Other component with a USB port
- USB charger

Make sure the selected component is plugged into a working power outlet. **Do not use a PS3 USB port for power** as those ports are not powered when the PS3 is in standby mode. If these steps fail, replace the USB cable.

If the status light on the device will not light up, contact Schmartz for help.

- 2) **Is the PS3IR-500 receiving and processing IR commands?** If you are using Auto IR mode, set your remote control to address the PS3 and click buttons on the remote to send IR commands. If the status light flashes briefly when you click a button on the remote, then the unit is receiving and processing IR commands. If you are using IR External mode, the status light should flash when IR commands are delivered through the IR Repeater. If the status light is flashing when IR commands are delivered to the PS3IR-500 go to step 3.

If the status light is not flashing, consider:

- Is your remote control properly programmed with the proper IR codes? Be sure to consider the Code Set configuration.
- Is the remote control working (i.e., will it operate other devices properly)?
- Is the remote control set to address the PS3IR-500?
- Is there an unobstructed line of sight between the remote control and the PS3IR-500?
- Is the PS3IR-500 set up for External IR? The factory default setting is for Auto IR processing. Run the PS3IR-500 Utility to check the IR Mode setting.

If you are unable to get the status light to flash (indicating IR command processing), contact Schmartz for help.

- 3) **Is the PS3IR-500 properly paired with your PS3?** Assuming the status light flashes in response to IR commands and the PS3 is not accepting commands from the PS3IR-500, you have to re-do the pairing procedure. (Refer to the installation instructions). After pairing, if the status light flashes and the PS3 is not responding, connect your PS3IR-500 to your computer and run the Utility to operate the PS3 from your computer (See "PC Remote Control" section). If all this fails please, contact Schmartz for additional help.

PS3 will not power down

Problem: I issue a command from the PS3IR-500 to power off the PS3 but the PS3 does not shut off.

Solution: Contact Schmartz support.

Remote operates inconsistently, range not satisfactory

Problem: My remote works sometimes or I have to move closer to the PS3IR-500.

Solution: Most IR remote controls should operate correctly up to 25 feet. Put new batteries in the remote control to make sure they are fresh. Make sure there is an unobstructed view between the remote and the PS3IR-500. Avoid bright sunlight or very bright incandescent light near the PS3IR-500. Plasma TV screens may also interfere with operation of IR remote controls.

PS3 powers up unexpectedly

Problem: The PS3 powers up unexpectedly. Usually when I am shutting everything down, the PS3 comes on.

Solution: The PS3IR-500 normally keeps track of the PS3 power status internally. If you have done anything manually to the PS3 that affects power that the PS3IR-500 is unaware of (powered off PS3 using a game controller, use the manual power switch, or insert a DVD), the PS3IR-500 may be out of sync regarding power status. This situation can be remedied by powering off and powering on the PS3IR-500.

Not responding to Remote Control

Problem: The PS3IR-500 is not responding to my remote control (status light not flashing as expected).

Solution: The PS3IR-500 can be configured to accept 4 different code sets. The setup of your remote control must agree with the Code Set configuration in the PS3IR-500. Perform the following checks:

- Connect the PS3IR-500 to your PC and start up the Utility program. Go to the settings tab and note the Code Set configuration selected (A, B, C or D).

Verify that your universal remote control is set up with the matching Code Set (A, B, C or D). You may have to refer to the PRONTO CODE Spreadsheets on Schmartz.com for the full Code Set definitions to complete this step.

Regulatory Compliance

The PS3IR-500 complies with Part 15 of the FCC Rules. Operation is subject to the following two conditions:

1. This device may not cause harmful interference
2. This device must accept any interference received, including interference that may cause undesired operation.

Changes or modifications not expressly approved by Schmartz Inc. could void the authority to operate the equipment.

NOTE: This equipment has been tested and found to comply with the limits for a Class B digital device, pursuant to Part 15 of the FCC Rules. These limits are designed to provide reasonable protection against harmful interference in a residential installation. This equipment generates, uses and can radiate radio frequency energy and, if not installed and used in accordance with the instructions, may cause harmful interference to radio communications. However, there is no guarantee that interference will not occur in a particular installation.

If this equipment does cause harmful interference to radio or television reception, which can be determined by turning the equipment off and on, the user is encouraged to try to correct the interference by one or more of the following measures:

- Reorient or relocate the receiving antenna.
- Increase the separation between the equipment and receiver.
- Connect the equipment into an outlet on a circuit different from that to which the receiver is connected.
- Consult the dealer or an experienced radio/TV technician for help.